



MEOS™ Control

Ground Station Control made easy

MEOS™ Control is a flexible and scalable system, providing one interface, for both local and remote monitoring and control of standalone units at a Ground Station.

Problems Adressed

A typical Ground Station often consists of a number of specialized units, e.g. demodulators, modulators, antenna control units (ACU), converters, switch matrices, etc. (These units normally have their own Graphical User Interface (GUI), but also a well-defined interface (API)). Instead of handling these units as stand alone units, *MEOS Control* integrates them into one overall system, with a common GUI and a common API for remote operations.

Operational Modes

All units integrated into *MEOS Control* can be scheduled as one system, thus, being setup automatically prior to activities. *MEOS Control* supports both immediate and time-based scheduling. This implies that ACU, demodulators, switch matrices, etc. can be scheduled in one operation to handle the mission in question.

During operation, *MEOS Control* collects all available status information from the connected units. This status information can be provided in real-time through the *MEOS Control's* external interface and through the embedded GUI, and summarized as post-pass quality reports.

When combined with MEOS Connect, the Ground Station units become an integrated part of an overall Ground Station network.

Features

- Common Graphical User Interface and external interface to all integrated units
- Monitoring and control of any number of units
- Historical status data kept in SQL database, with several access tools
- Conceptual support for any overall monitoring and control system
- JAVA based Graphical User Interface
- Socket based external interface, in XML format
- Scalable architecture, allowing for new units to be added
- MEOS Connect ready

Benefits

- One common API and GUI to interface all stand-alone units
- Connected units appear as an integrated part of the system, thus, providing one common entry point for scheduling and status information
- Activities can be scheduled immediately or time-based
- Extensive quality reports summarizing past activities, incorporating status from all units into one XML report
- JAVA based Graphical User Interface can be run locally, and on any computer supporting JAVA (over the network, even through a standard Web browser)
- Stand-alone operation or under control of an external monitoring and control system (or MEOS Connect)



Operational environment at Kongsberg Satellite Services in Norway.

Supported units

The following units are supported by *MEOS Control*:

- Receivers
 - Alcatel Omnisat demodulator
 - Alcatel ADAS A9910 Omnisat
 - InSnec Cortex HDR
 - Aydin BPSK Demodulator model 3329
 - Microdyne MRC-1200 receiver
 - Microdyne MRA-1400 receiver
 - Microdyne 700 Receiver/1620 Combiner
 - Quorum DSP/Modis receiver
 - Graylabs WDR Demodulator
- Modulators
 - Alcatel Bell omnisat modulator
 - Alcatel ADAS A9910 Omnisat
 - Apogee PSK modulator, model 4712
- Switch Matrices
 - Cornet Corscan Matrix switch
 - Specialty Micro Wave RF-switch
- Antenna Controllers
 - Viasat SCC
 - Datron Ground Station Controller
 - Yantai Antenne Controller Unit
 - Quorum ACU

- Miscellaneous
 - ADAM Rele' switch (ADAM-4520 RS232-RS485 + ADAM-4060 Rele')
 - Apogee Tracking Data Formatter, 2208
 - HP ESG Family signal-generator
 - SMP Up/Down Converter UDC 2023
 - GDP Format Synchronizer model 225-A
 - Cortex CRT (NT/XL/2000)
 - GDP PCM-Bitsynch Model 265-7
 - Quorum X-Band downconverter

Supported interfaces

The following interfaces are supported by *MEOS Control*:

- Monitoring and Control interfaces
 - TCP/IP
 - HTTP(S)
- Unit interfaces
 - RS-232/422
 - TCP/IP
 - GPIB

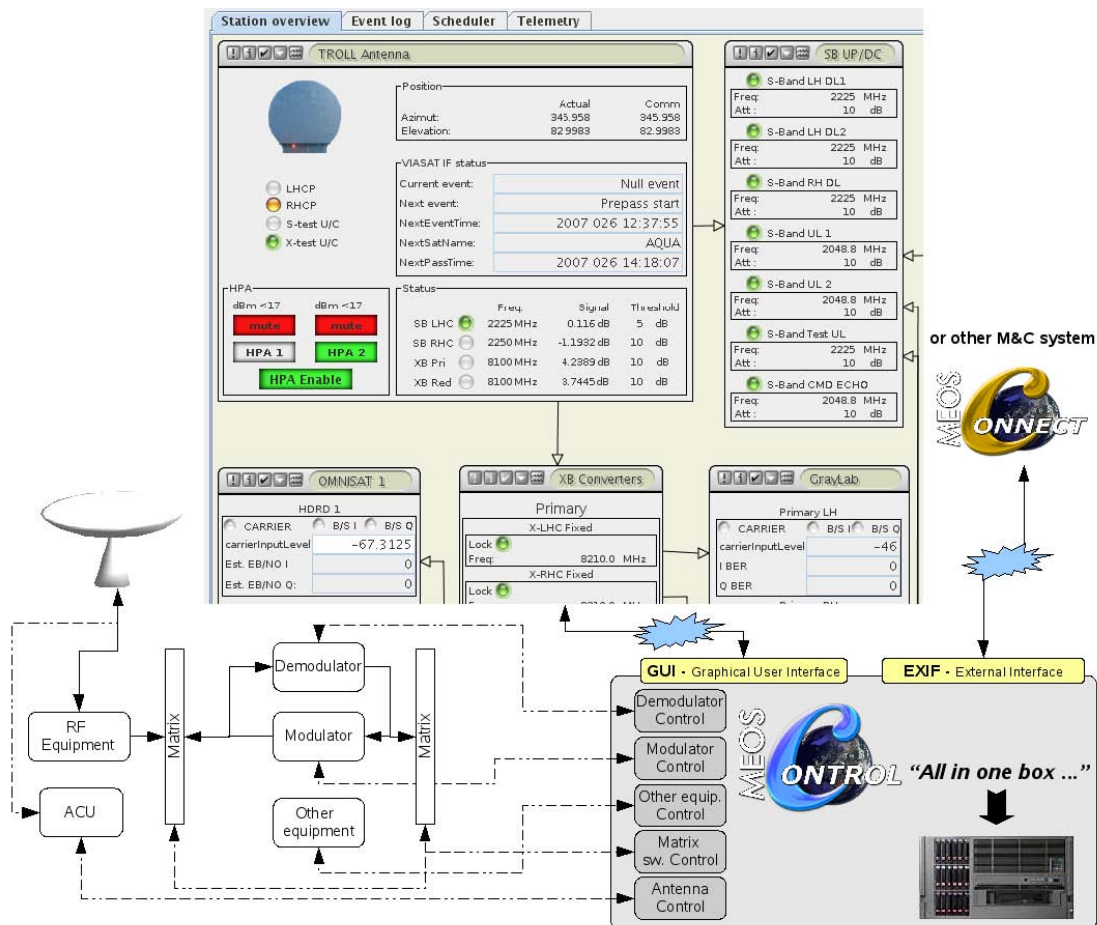
Supported Platforms

MEOS Control is delivered with SuSe Linux. Other platforms may be available upon request.

Related products

- MEOS Connect
- MEOS Capture

Display Examples



Note:
MEOS is a registered trademark of Kongsberg Spacotec AS.
 Specifications are subject to change without notice.

KONGSBERG SPACETEC AS

Prestvannveien 38 P.O.B. 6244 NO-9292 Tromsø NORWAY
 Phone: +47 77 66 08 00 Fax: +47 77 65 58 59 Email: marketing@spacotec.no www.spacotec.no



KONGSBERG